

ISCO

We make it visible.

Now 3 Technical
Achievement Awards
for cinema projection
lens series manufactured
by ISCO.



ISCOSCOPE® II

ISCOSCOPE® II Motorized Sled

The ISCOSCOPE® II Motorized Sled can be used with nearly all LCD, DLP™, D-ILA™ and LCOS™ projectors. It is a great convenience for easily changing the image formats optically with nearly no light loss.

The ISCOSCOPE® II Motorized Sled is just mounted in front of the projector lens standing uprightly as well as upside down at the ceiling.

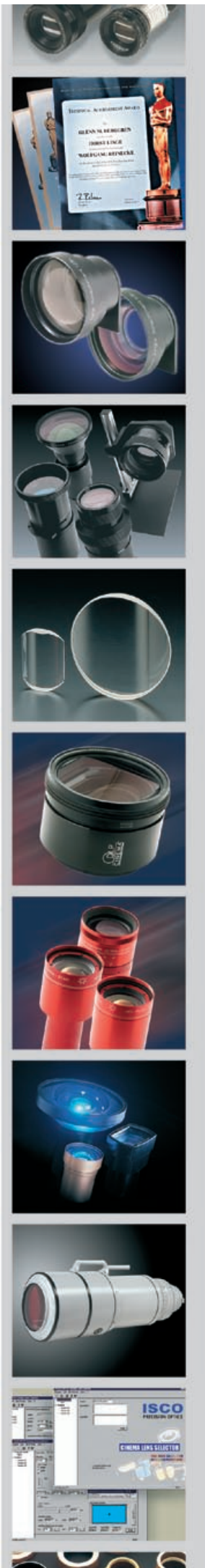
The wide shift range allows the use of the following ISCO Anamorphic Attachments:

1.25x, 1.33x II, 1.33x III S, 1.33x III L, 1.42x, 1.77x.

▶ **ISCO**
B + W Filterfabrik
Johannes Weber GmbH & Co KG
Anna-Vandenhoeck-Ring 5
37081 Göttingen / Germany

Phone +49 (0) 551 - 50 58 - 3
Fax +49 (0) 551 - 50 58 - 410

E-Mail info@isco.eu
Internet www.isco.eu



ISCOSCOPE® II Motorized Sled

order no. 749.55

Controls: IR, RS 232, 12V trigger



ISCOSCOPE® II Motorized Sled

Specification:

Dimensions:

Length 533.4 mm / 21.0"
Width 114.2 mm / 4.5"
Height 74.0 mm / 2.9"

Weight: 2.3 kg / 5.0 lbs (motorized sled only)

Drive: Belt drive

Control Type: Infrared, RS 232, 12 V trigger

Power Supply: Input 100 - 240 V, 0.8 A, 47 - 63 Hz
Output 24 V DC, 1.25 A min.

Mount: Table-top or upside-down ceiling mount

Compatibility:

1.25x Anamorphic Attachment	(order no. 300.21)
1.33x Anamorphic Attachment II	(order no. 345.00) - discontinued model
1.33x Anamorphic Attachment III S	(order no. 345.02)
1.33x Anamorphic Attachment III L	(order no. 345.05)
1.42x Anamorphic Attachment	(order no. 301.04)
1.77x Anamorphic Attachment	(order no. 300.30)

ISCO Multi Stand II Mount

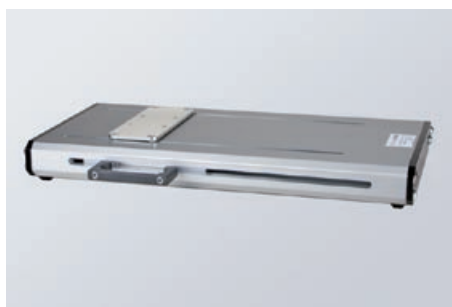
order no. X749.48.01

optionally available for:
ISCOSCOPE® II Motorized Sled



ISCOSCOPE® Shiftstand hand operated attachment

order no. 749.53



optionally available:

ISCO Multi Stand II
order no. X749.48.00

ISCOSCOPE® Shiftstand

Specification:

Dimensions:

Length 508.0 mm / 20.0"
Width 260.0 mm / 10.2"
Height 48.0 mm / 1.9"

Weight: 5.5 kg / 12.1 lbs (shiftstand only)

Compatibility:

1.25x Anamorphic Attachment	(order no. 300.21)
1.33x Anamorphic Attachment II	(order no. 345.00) - discontinued model
1.33x Anamorphic Attachment III S	(order no. 345.02)
1.33x Anamorphic Attachment III L	(order no. 345.05)
1.42x Anamorphic Attachment	(order no. 301.04)
1.77x Anamorphic Attachment	(order no. 300.30)